

**PREP Antibody (Center)**  
**Affinity Purified Rabbit Polyclonal Antibody (Pab)**  
**Catalog # AP18992C**

**Specification**

---

**PREP Antibody (Center) - Product Information**

Application	WB,E
Primary Accession	<a href="#">P48147</a>
Other Accession	<a href="#">NP_002717.3</a>
Reactivity	Human
Host	Rabbit
Clonality	Polyclonal
Isotype	Rabbit IgG
Calculated MW	80700
Antigen Region	293-322

**PREP Antibody (Center) - Additional Information**

**Gene ID** 5550

**Other Names**

Prolyl endopeptidase, PE, Post-proline cleaving enzyme, PREP, PEP

**Target/Specificity**

This PREP antibody is generated from rabbits immunized with a KLH conjugated synthetic peptide between 293-322 amino acids from the Central region of human PREP.

**Dilution**

WB~~1:1000

E~~Use at an assay dependent concentration.

**Format**

Purified polyclonal antibody supplied in PBS with 0.09% (W/V) sodium azide. This antibody is purified through a protein A column, followed by peptide affinity purification.

**Storage**

Maintain refrigerated at 2-8°C for up to 2 weeks. For long term storage store at -20°C in small aliquots to prevent freeze-thaw cycles.

**Precautions**

PREP Antibody (Center) is for research use only and not for use in diagnostic or therapeutic procedures.

**PREP Antibody (Center) - Protein Information**

**Name** PREP

**Synonyms** PEP

**Function** Cleaves peptide bonds on the C-terminal side of prolyl residues within peptides that are up to approximately 30 amino acids long.

**Cellular Location**

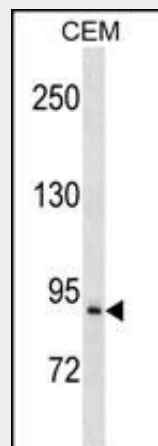
Cytoplasm.

**PREP Antibody (Center) - Protocols**

Provided below are standard protocols that you may find useful for product applications.

- [Western Blot](#)
- [Blocking Peptides](#)
- [Dot Blot](#)
- [Immunohistochemistry](#)
- [Immunofluorescence](#)
- [Immunoprecipitation](#)
- [Flow Cytometry](#)
- [Cell Culture](#)

**PREP Antibody (Center) - Images**



PREP Antibody (Center) (Cat. #AP18992c) western blot analysis in CEM cell line lysates (35ug/lane). This demonstrates the PREP antibody detected the PREP protein (arrow).

**PREP Antibody (Center) - Background**

The protein encoded by this gene is a cytosolic prolyl endopeptidase that cleaves peptide bonds on the C-terminal side of prolyl residues within peptides that are up to approximately 30 amino acids long. Prolyl endopeptidases have been reported to be involved in the maturation and degradation of peptide hormones and neuropeptides.

**PREP Antibody (Center) - References**

Pinheiro, A.P., et al. Am. J. Med. Genet. B Neuropsychiatr. Genet. 153B (5), 1070-1080 (2010) :  
Rose, J. PhD, et al. Mol. Med. (2010) In press :  
Tenorio-Laranga, J., et al. J Neuroinflammation 7, 23 (2010) :  
Pillas, D., et al. PLoS Genet. 6 (2), E1000856 (2010) :  
Malhotra, A., et al. Diabetes Metab. Res. Rev. 25(8):740-747(2009)